

STRAIGHTLINE PERFORMANCE

Polaris Xpedition Backup Beeper Kit Installation Manual 287-121

Deutsch Connector
For Backup Beeper

2-Pin Connector

Bus Bar
Connector

Beeper

Fuse

Wiring
Harness

Relay

Mini
Controller

Diagnostic Connector

Zip Ties

Required Tools:

Torx Bit Set
Metric Wrench Set
Flat Screwdriver (push rivets)
Wire Cutter (trimming zip ties)
Philips Screwdriver
Utility Knife

Read entire manual before beginning the installation process.

Disclaimer: Sam's Backup Lights is not responsible for any damage due to improper installation.

Step 1: Remove Seat, Hood, and Grill

- 1) Remove two screws from the front of the driver's seat and tilt seat backward to remove; this will make installation easier.
- 2) Loosen grill by turning the locks one-quarter turn.
- 3) Lift to remove grill.
- 4) Remove hood straps and lift to remove hood.

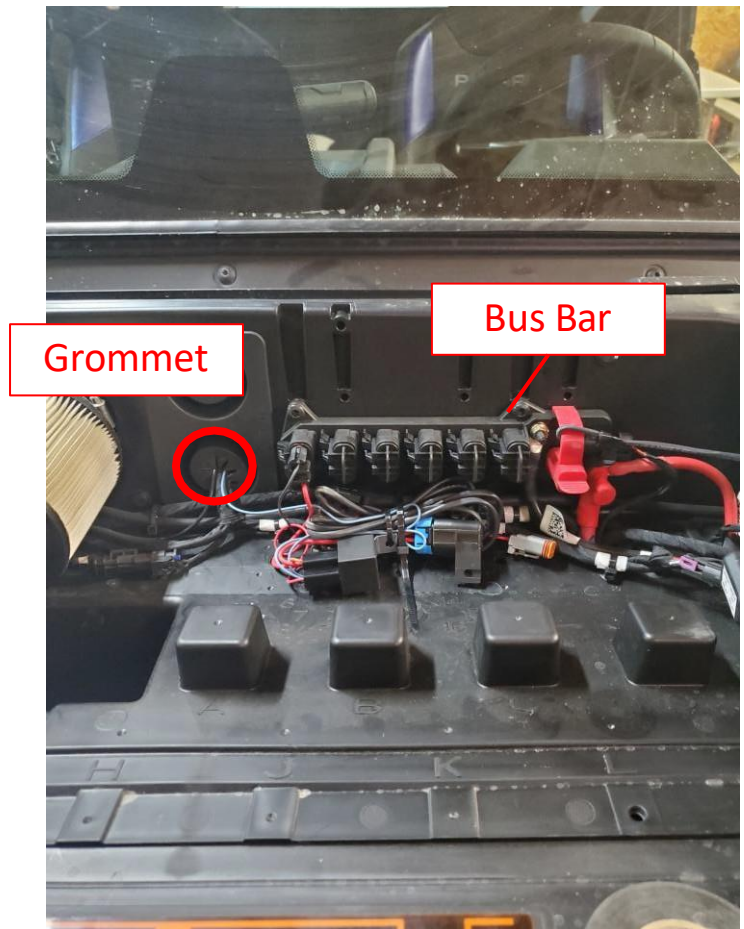


Step 2: Remove Optional Plastics

- 1) If applicable, remove any plastics under dash to access the diagnostic connector and OEM wiring harness.

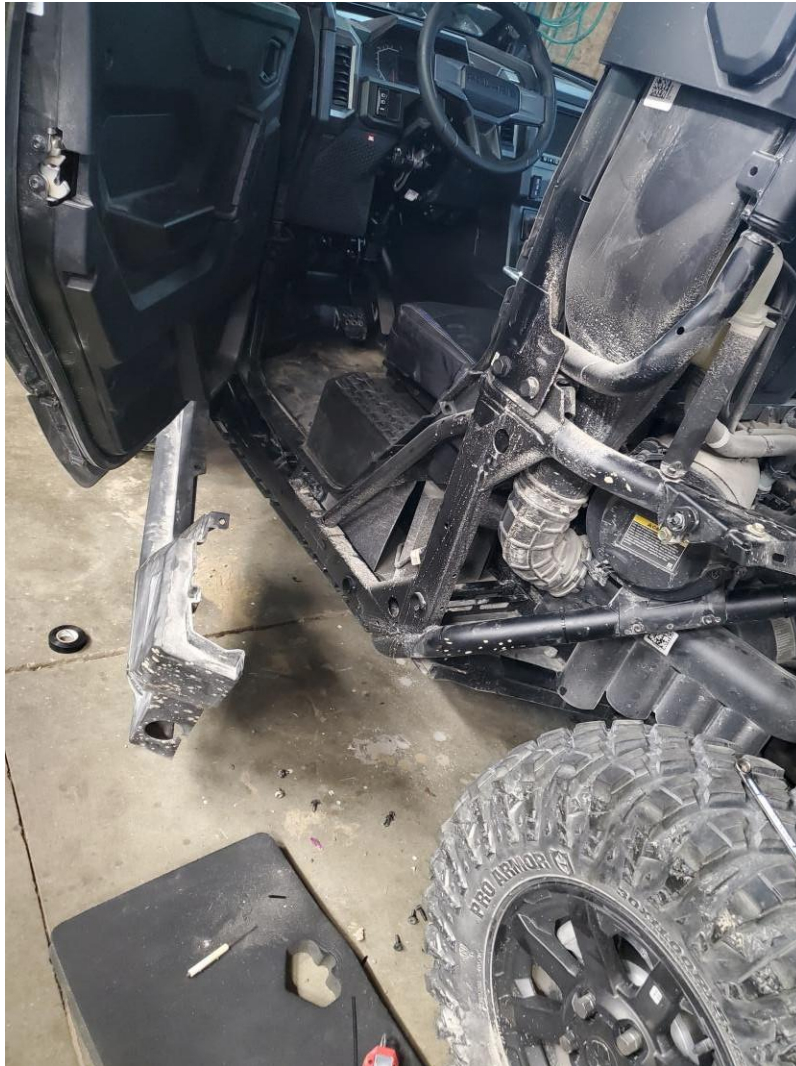
Step 3: Install Controller, Relay, and Fuse

- 1) Plug supplied diagnostic connector into mini-controller and factory diagnostic connector. Located under the dash on the drivers-side under the steering wheel
- 2) Zip tie to OEM wiring harness.
- 3) Using the factory holes, zip tie relay, fuse, and related wires using supplied Christmas tree zip ties.
- 4) Plug bus bar connector on harness into bus bar.
- 5) Feed the Light Blue wire thru the grommet to underside of dash and connect into the mini-controller



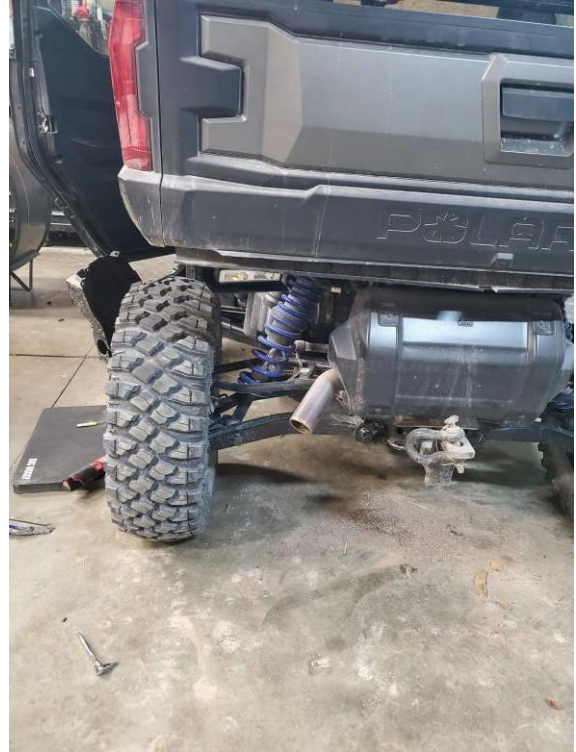
Step 4: Remove Side Plastic

- 1) Remove the screws and push rivets holding the side plastics on.



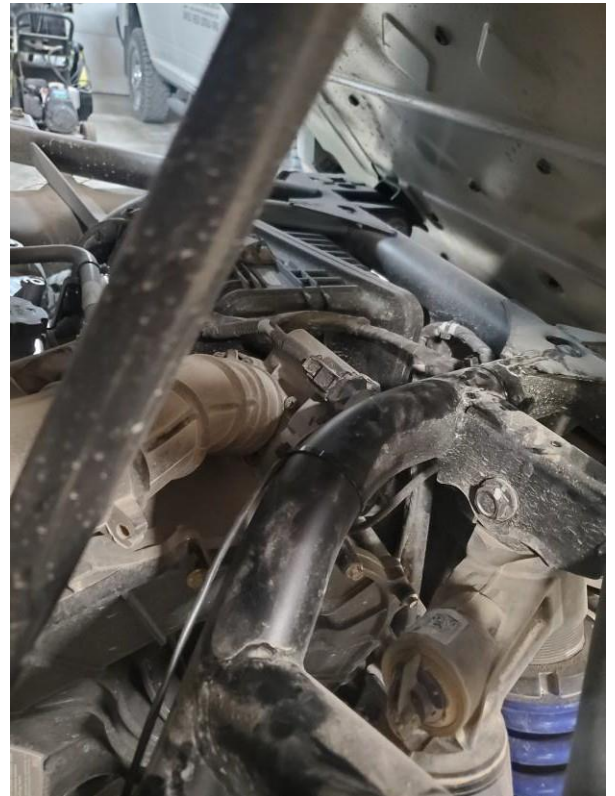
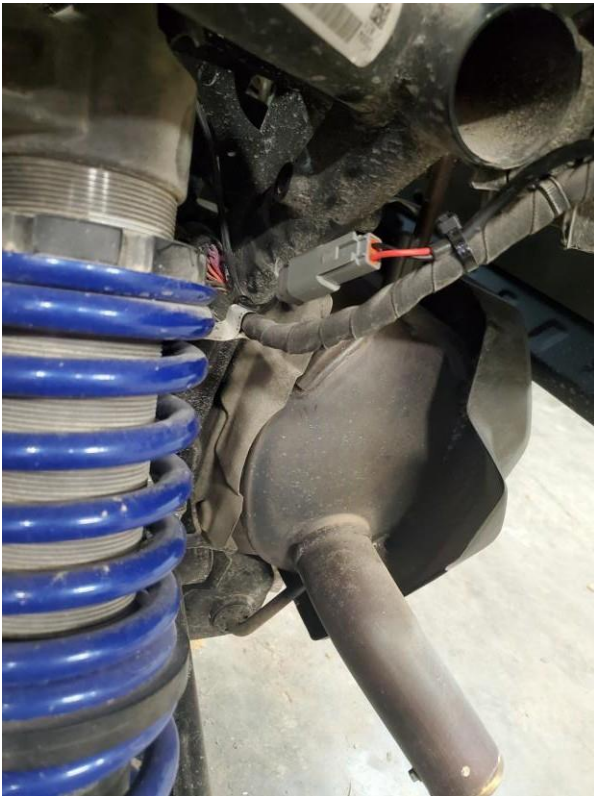
Step 5: Mount Backup Beeper

- 1) Attach the Beeper to its bracket. Be sure to slide the bolt through the bracket before bracket is attached to light.
- 2) Depending on model and options mounting location will change.



Step 6: Run Wire To Backup Beeper

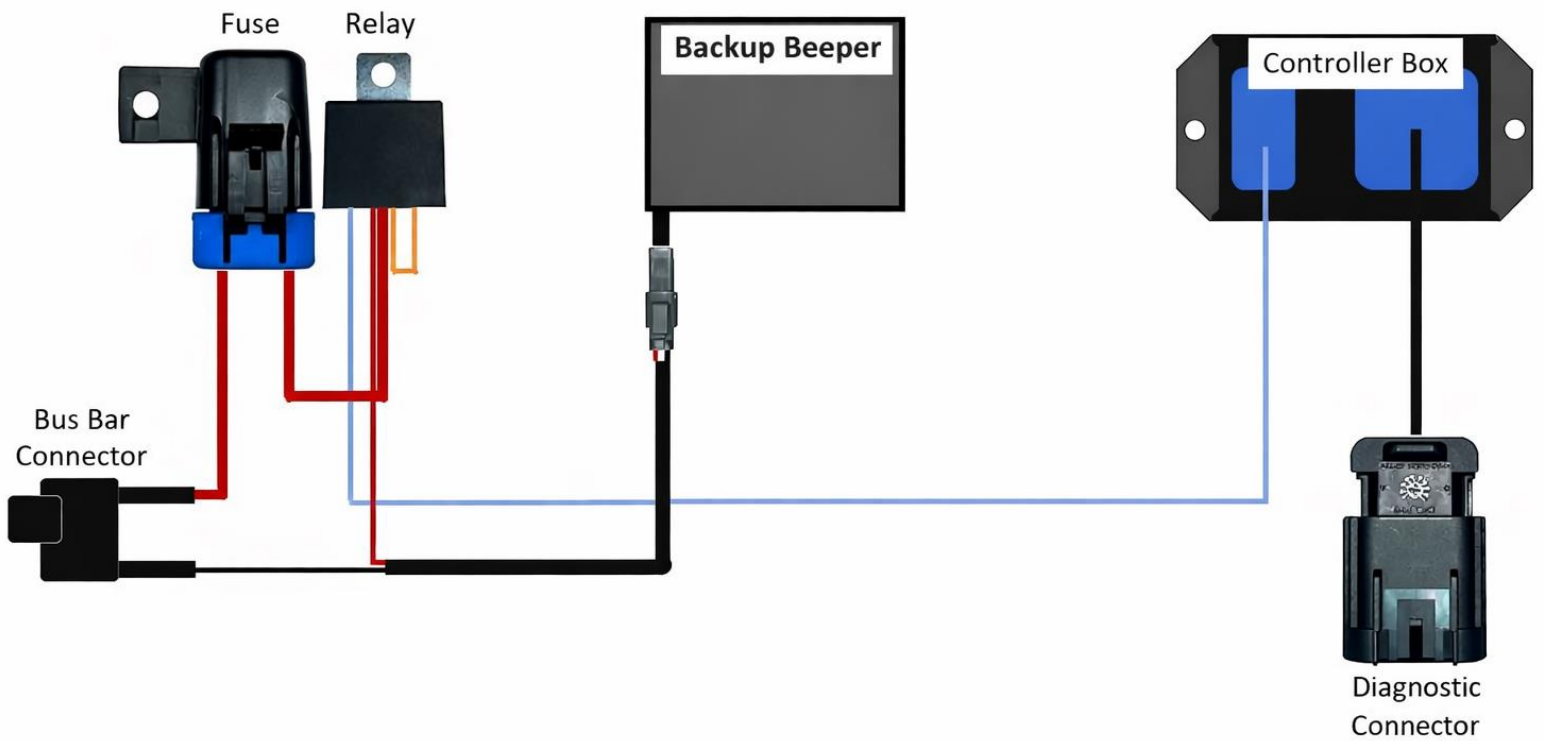
- 1) Run harness from battery to the Backup Beeper.
- 2) Follow the factory wiring harness and secure the beeper wiring keeping away from heat and moving parts.
- 3) Plug the connector into the beeper



Step 7: Reinstall All Body Pannels

1) Reinstall All Body Pannels.

Automatic Backup Beeper





Operation Backup beeper

- **Fully Automatic when shifted to Reverse Gear**

- 1) No programming required

Note: If the ignition is turned off while the vehicle is in reverse, or the manual override function is enabled the lights will remain ON until the ECU enters sleep mode (approximately 30 secs to 2 minutes depending on vehicle and ECU type).

Part Number	Description	Quantity	In Box
IT-287-102	Polaris Diagnostics Adapter Purple and black 8 pin plug on one end and 4 pin white plug on the other.	1	
IT-287-101	Controller	1	
IT-287-108	Polaris pulse bar powered main harness 197" single light plug, includes relay	1	
IT-287-109	Blue 7" jumper from harness relay to controller, 2 pin plug on one end flat locking spade on other.	1	
IT-288-102	Zip tie with Christmas tree	3	
IT-288-105	Bagged female Deutsch connector with pins seal and lock.	1	
IT-288-109	Backup Beeper	1	
Np-209	Zip tie 6"	10	
	Insert blue wire into relay connector, directions in folder (SPI in house)		
Instruction Card	Instruction Card	1	
Sticker	Sticker	1	