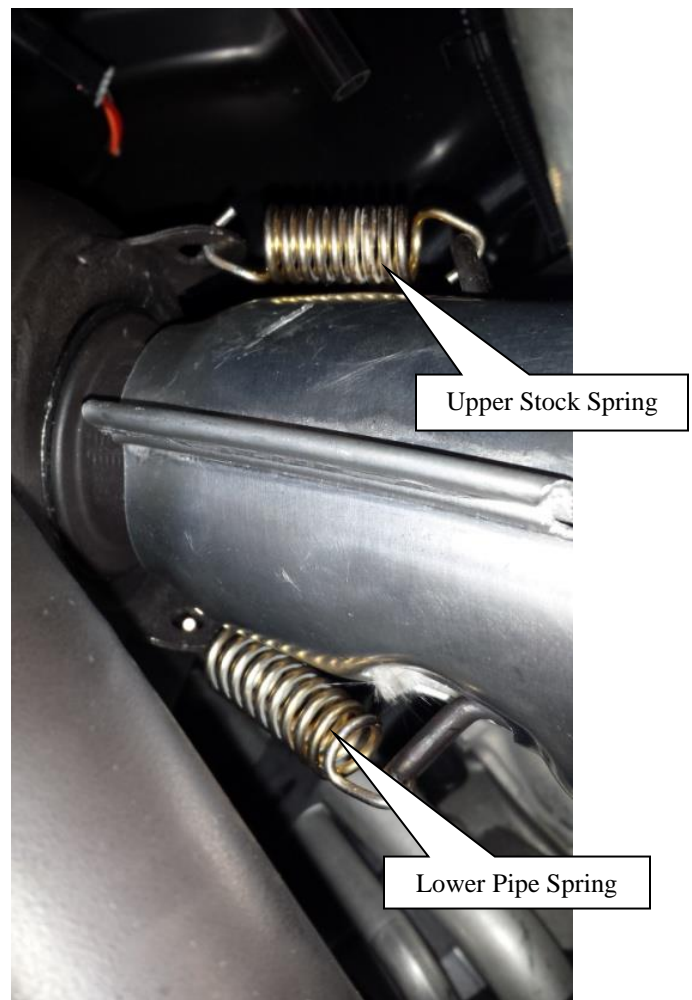
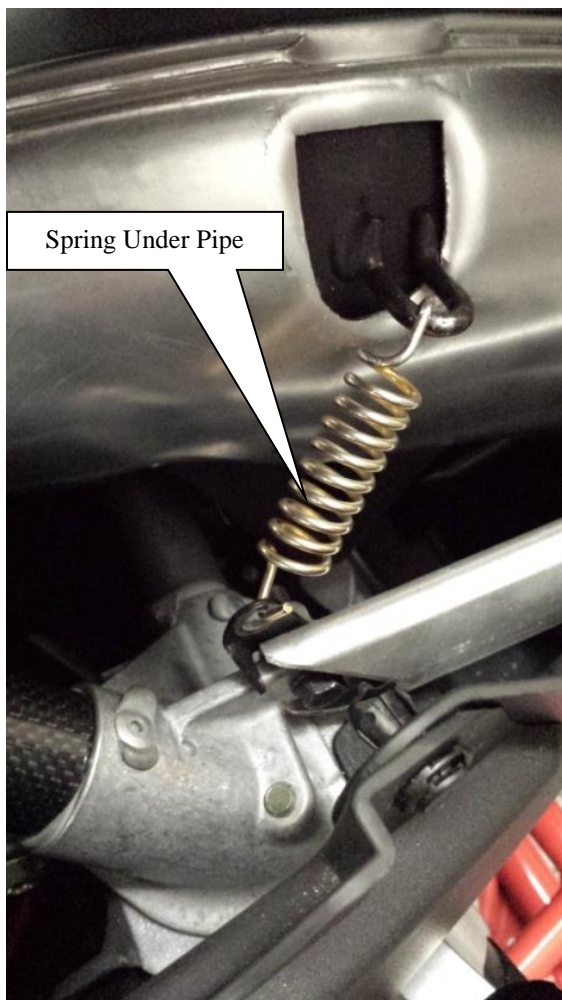


STRAIGHTLINE PERFORMANCE

Polaris MATRYX 900R Lightweight Muffler 132-160 (Ceramic)

Installation Instructions

1. Step one is to remove the Polaris muffler by removing the springs located below on the first 4 pictures.
2. Then, remove the stock muffler from the engine compartment by shifting the muffler forward and then lifting out. The stock pipe will have to be lifted up and forward to help aid in the removal. Be sure not to damage the stock graphoil in between the muffler and pipe.
3. Install the SPI lightweight muffler into the locations below and spring the muffler to the pipe and chassis. See picture below for spring areas. Be sure to use the correct length springs in the correct areas.
4. The front spring mount will be made with the P-clamp, spring tab, bolt, and washer. See Page 2 for assembly.
5. **NOTE:** For ease of install, completely install the muffler, then tighten the mini clamp. Do not over tighten the wing nut part of the clamp, it does not need to be extremely tight.

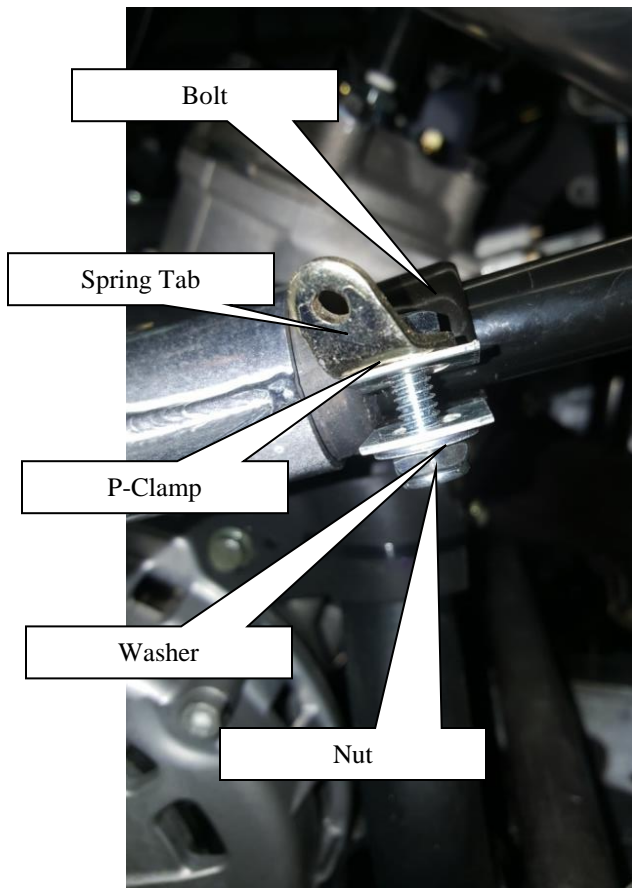




Rear Stock Muffler Spring



Stock Front Muffler Spring



Bolt

Spring Tab

P-Clamp

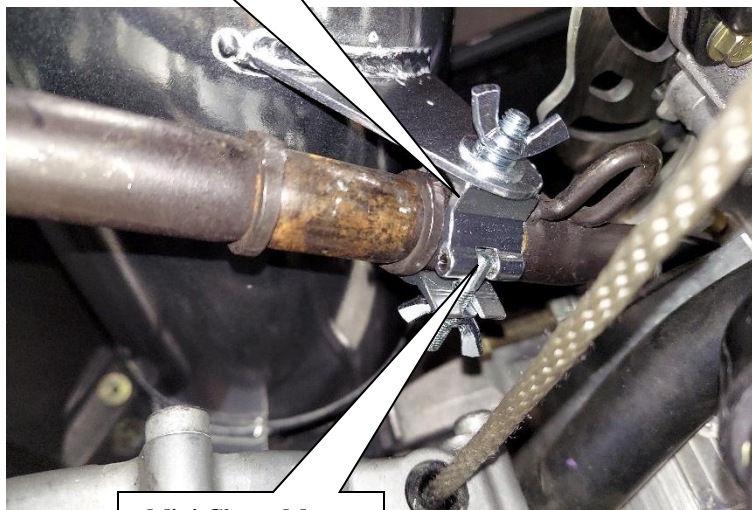
Washer

Nut



Stock Front Muffler Spring

Be sure to install the clamp in-between the spring tab and weld ring.



Mini Clamp Mount



Bill of Materials Included.

Quantity	Part #	Descriptions	In Box
1	132-144	Muffler	
1	1137020	1/4-20 Nylock Nut	
1	WS-380	Two Hole Spring Tab .185 & .320	
1	NP-162	1/4 washer	
1	110120302	5/16" X 1-1/2" Hex Cap Screw	
1	447089	3/4" P-Clamp	
1	Mini 360 F14 CLS2001	Mini Clamp	
1		Sticker	
1		Directions	

Checked and Packaged By

Warranty

Be sure the Straightline lightweight muffler has no manufacture defects.
If the pipe has been run/used there are **no warranties** for fitment.

Specifications

Jetting Not Required use factory specifications.
Clutching Not Required use factory specification