

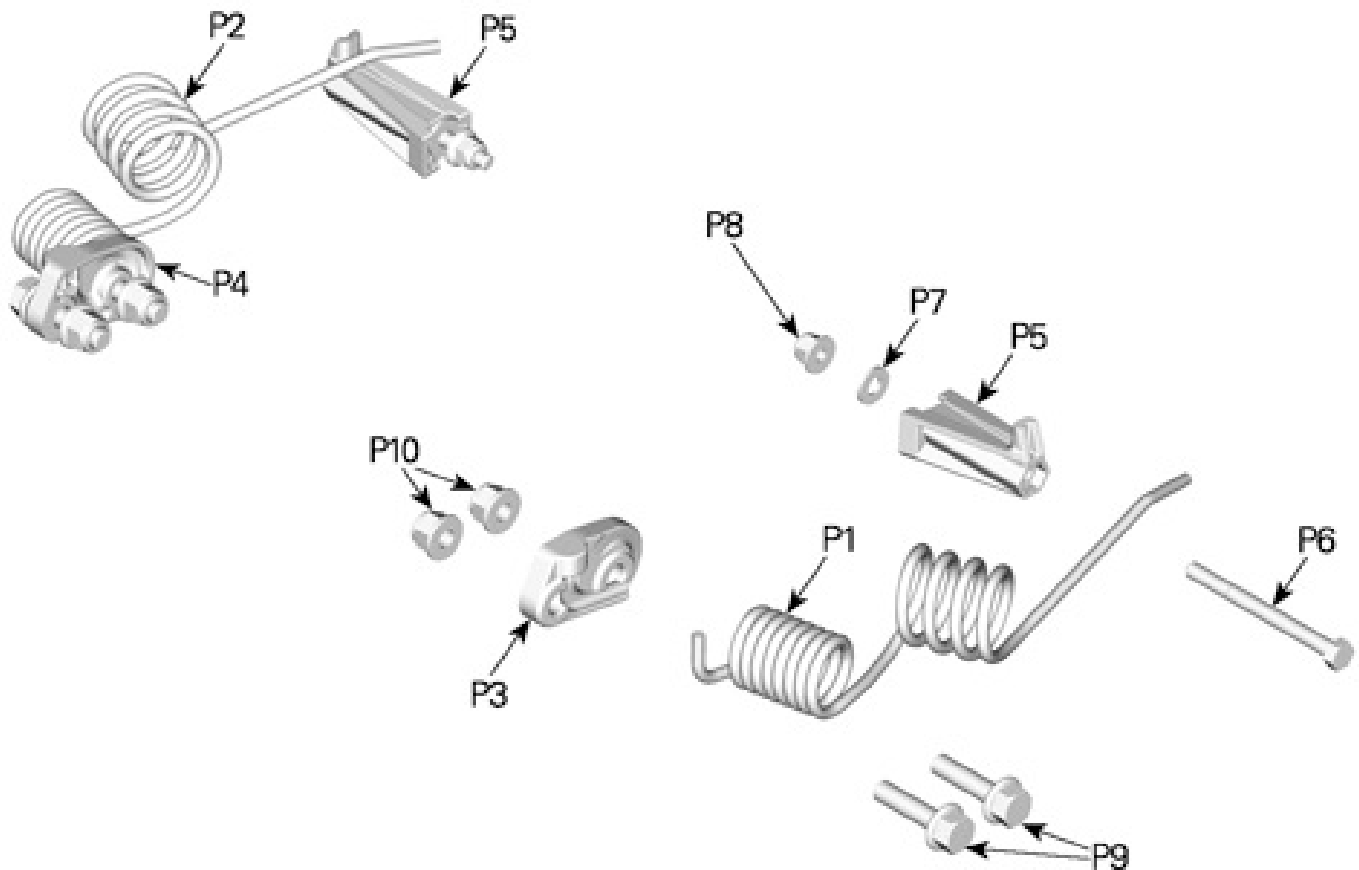


## SS-8 Reversible Ice Scratcher Installation Instructions

**NOTE:** The illustrations in this document show typical construction of the different assemblies and may not reproduce the full detail or exact shape of the parts; however, they represent parts that have the same or similar function.

Installation time is approximately 0.5 hours.

### PARTS TO BE INSTALLED

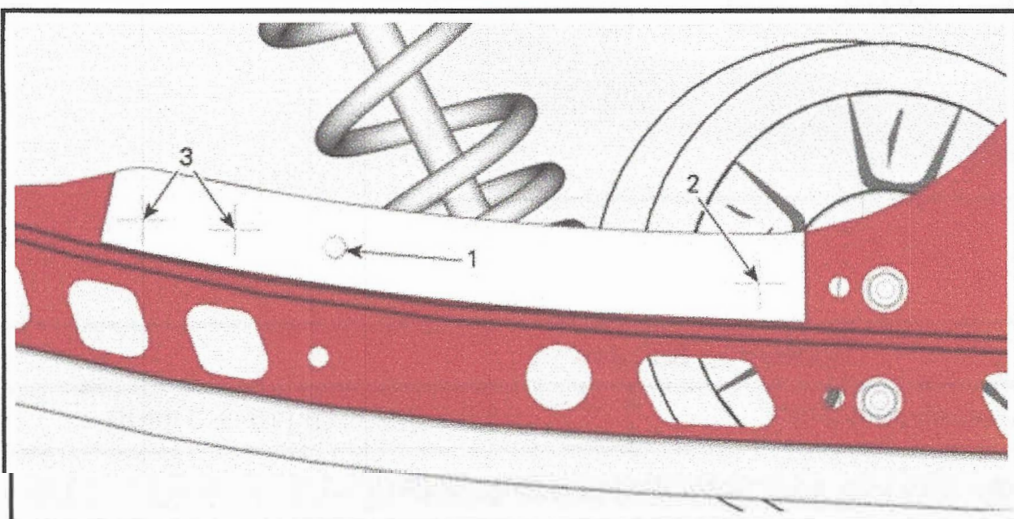


P1	LH Rail ice scratcher	1
P2	RH Rail ice scratcher	1
P3	LH Rail ice scratcher support	1
P4	RH Rail ice scratcher support	1
P5	Hook Ass'y	2
P6	M6 x 70 Hexagonal screw	2
P7	M6 Washer	2
P8	M6 Flange hexagonal elastic nut	2
P9	M8 x 30 Flange hexagonal screw	4
P10	M8 Flange hexagonal elastic nut	4

## Ice Scratcher installation

**NOTE:** LH installation shown. Installation is the same for LH and RH side.

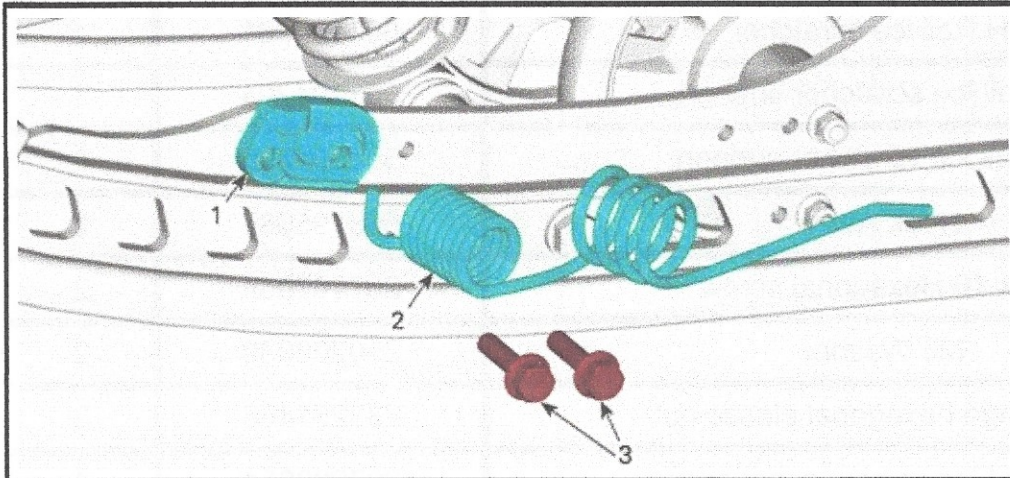
1. If rails are not pre-pierced, position template onto rails and mark drilling locations.
2. Drill a hole of 6.5 mm (1/4 in) on the rear mark. Drill 2 holes of 8.5 mm (11/32 in) on the front marks.



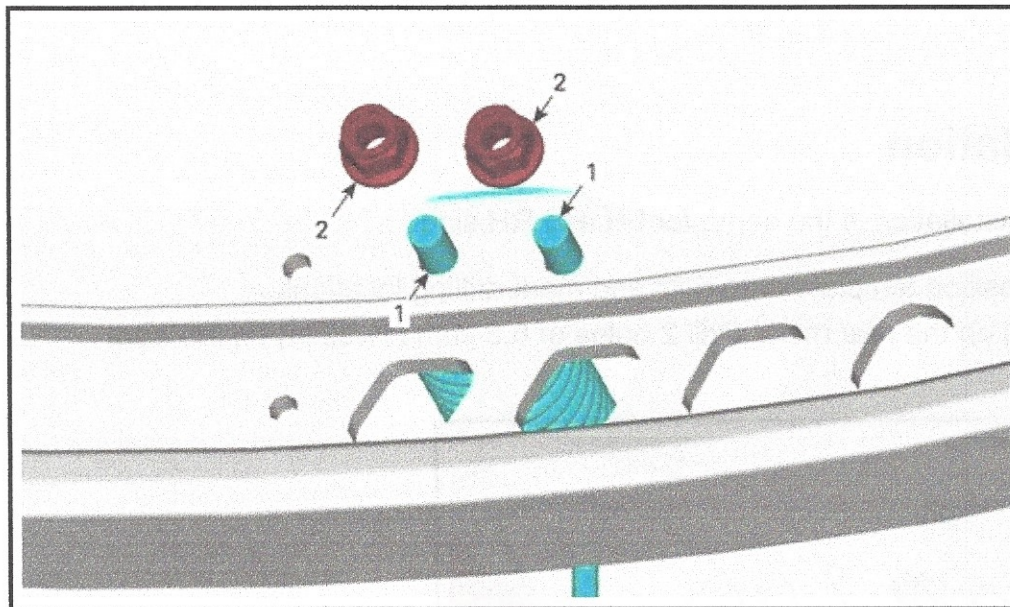
1. Reference hole to position template
2. Drilling location for 6.5 mm (1/4 in) hole
3. Drilling location for 8.5 mm (11/32 in) holes

3. Position LH ice scratcher support [P3] onto hole at the front of rail, install LH rail ice scratcher [P1] on it and secure assembly in place using M8 x 30 flange hexagonal screw [P9] and M8 flange hexagonal elastic nut [P10].

**NOTE:** Side of M8 x 30 flange hexagonal screw will prevent spring from rotating.



1. LH Rail ice scratcher support [P3]
2. LH Rail ice scratcher [P1]
3. M8 x 30 Flange hexagonal screw [P9]

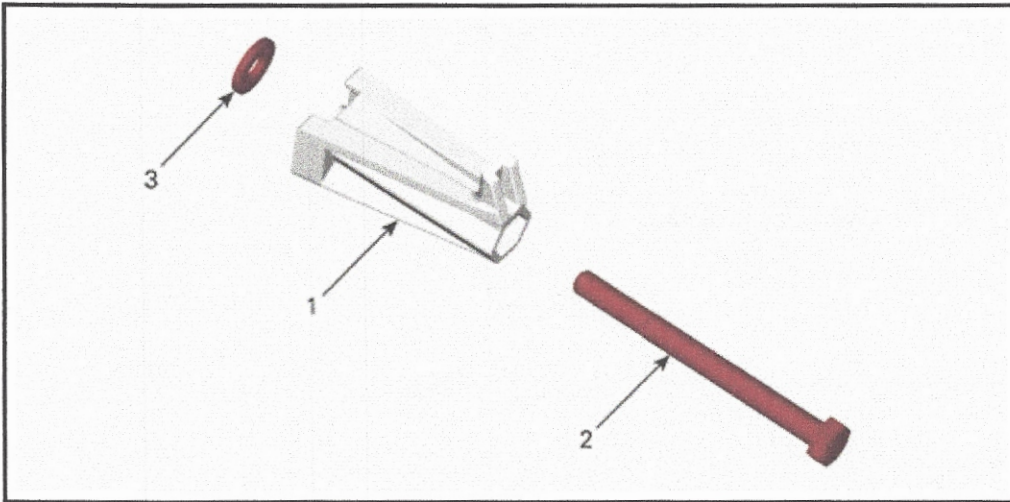


**INSIDE VIEW OF RAIL**

1. M8 x 30 Flange hexagonal screw [P9]
2. M8 Flange hexagonal elastic nut [P10]

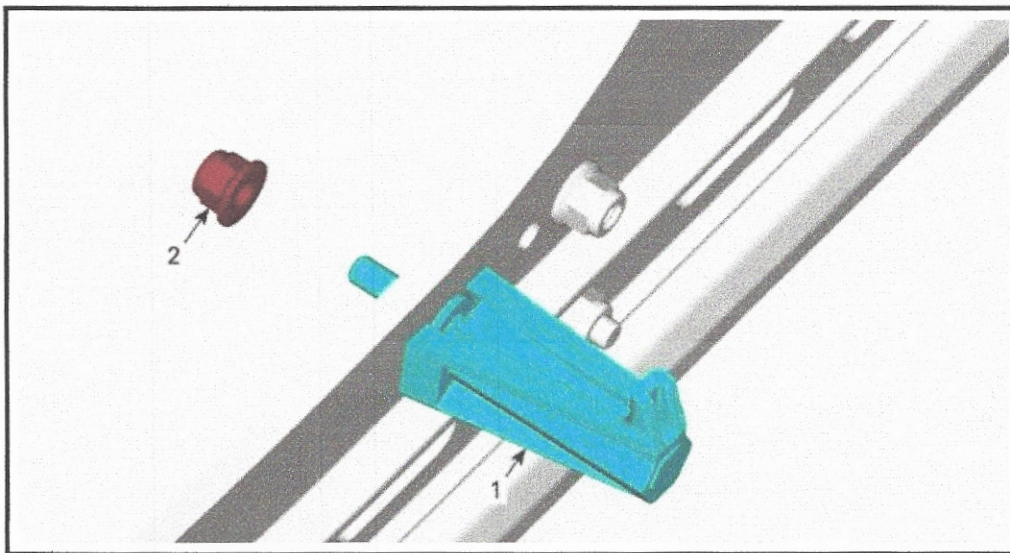
tightening torque	
M8 Flange hexagonal elastic nut [P10]	24.5 ± 3.5 N•m (18 ± 3 lbf•ft)

4. Insert M6 x 70 hexagonal screw [P6] into hook ass'y [P5] and washer [P7].



- 1. Hook ass'y [P5]
- 2. M6 x 70 Hexagonal screw [P6]
- 3. Washer [P7]

5. Position hook assembly [P5] onto rear hole and secure it in place by installing M6 flange hexagonal elastic nut [P8] on previously installed M6 x 70 hexagonal screw [P6].



- 1. Hook ass'y [P5] with screw and washer
- 2. M6 Flange hexagonal elastic nut [P8]

**tightening torque**

M6 Flange hexagonal elastic nut [P8]

10 ± 2 N•m (89 ± 18 lbf•in)

**⚠ CAUTION: Ice scratchers are spring loaded, handle with care.**

