

# STRAIGHTLINE PERFORMANCE

## Proper Installation of the QRS Helix Compressor (151-107)

### **Step 1.**

Remove the stock belt adjuster from the outer shaft of the QRS clutch.

### **Step 2.**

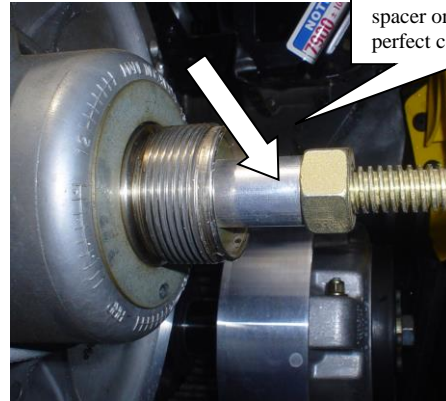
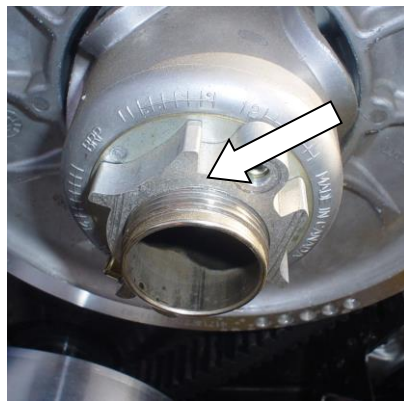
Insert tool inside of the hollow shaft of the QRS clutch, and tighten the nut down against the spacer. This can be done by hand. When the nut is too tight to turn by hand, use a wrench on the nut for extra support. It will not take a lot of pressure to support the tool.

### **Step 3.**

Install the plastic tube, then the washer, and last the handle. Turn and compress. It will only need to compress a ½” to aid

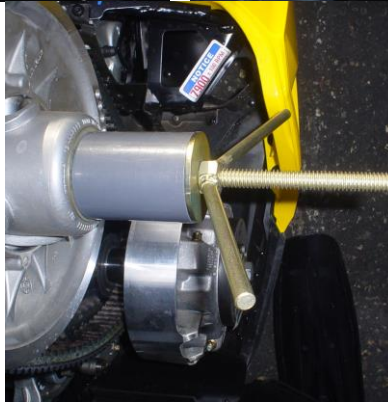
### **Step 4.**

Remove the bolts. Lastly, unwind compression handle.



Be sure to center the spacer on the washer for perfect compression.

Be sure to center spacer on the washer for perfect compression.



Technical questions please email [tech@straightlineperformance.com](mailto:tech@straightlineperformance.com)



Facebook @ straightlineperformanceinc

Youtube @ straightlineperfinc

Twitter @ straightlineperf