

STRAIGHTLINE **PERFORMANCE**

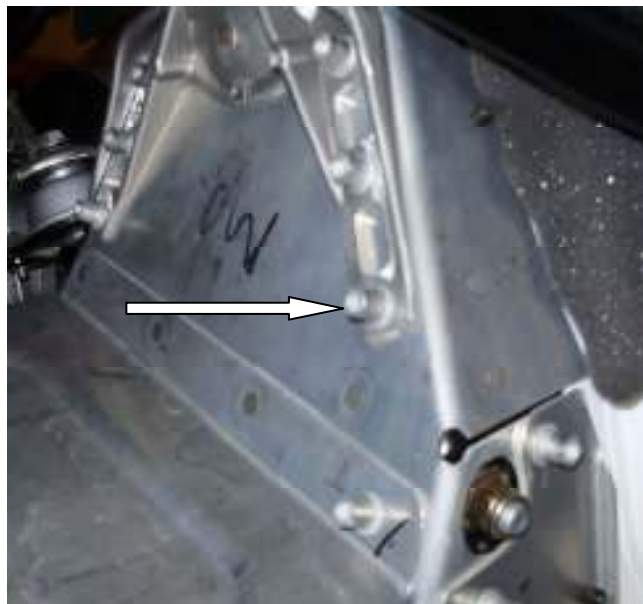
2008 Ski-Doo XP 600 H.O. /SDI Single Pipe 134-118 Polished Ceramic

Installations and Setting Instructions

Straightline Performance exhaust systems come ceramic coated, be sure to read and review the care and maintenance form before installing the exhaust products.

Be sure the Straightline exhaust has no manufacture defects. If the pipe has been run/used there are **no warranties** for fitment.

Remove the factory single pipe. Then remove the 2 aluminum rivets at the base of the front end. These are simply removed by a ball peen hammer and tapping on the rivet. It will break off and you can then install the supplied hardware as shown in the pictures below. This is important to help the pipe installation and fitment. Repeat this procedure on the other side.



Remove rivet with the arrow pointing to it



Re-install the button head screw as shown

Be sure the Straightline single has no manufacture defects. If the pipe has been run/used there are **no warranties** for fitment.

Jetting Requirements

600 H.O. S.D.I. - There are no jetting requirements for the SDI.

Peak rpm – Peak hp increase 8000-8100

Clutching - Straightline recommends adding an Adjustable Pin kit to your snowmobile to help enhance the power. Kits are available from Straightline or your local Ski-doo shop.

BOM

Quantity	Part #	Descriptions	In Box
1	134-118	Pipe	
2	1173755	1/4" x 1" Bolt	
2	1170860	1/4" Nylock Nut	
1		Sticker	
1		Directions	

Checked and Packaged By

Technical questions can be answered at tech@straightlineperformance.com



Facebook @ straightlineperformanceinc1

Youtube @ straightlineperfinc

Twitter @ straightlineperf

STRAIGHTLINE PERFORMANCE 15250 Hornsby St NE Forest Lake, MN 55025 651-466-0212
www.straightlineperformance.com sales@straightlineperformance.com fax 651-466-0213



Care and Maintenance of Ceramic Coatings

Congratulations on having your parts ceramic coated. These coatings are highly durable and will last for many years with proper care. Their longevity and appearance may be affected by the way you maintain and care for the coating.

PLEASE NOTE: EXCESSIVE EXHAUST GAS TEMPERATURES CAN DULL CERAMIC COATINGS ON EXHAUST MANIFOLDS AND HEADERS.

The proper care and maintenance of your headers is important for maintaining a long lasting shine you will be proud of for years to come. For most maintenance, going over the part with a micro fiber or terry cloth using high quality metal polish is all that is required.

Keeping your exhaust system looking like new, is a simple task that is often overlooked or disregarded. However, those that take the time to properly clean and polish these components, not only have an engine compartment they are proud to show off, they greatly extend the service life of their exhaust components. While other bolt on items may be inexpensive to replace, custom headers and/or exhaust systems can be very expensive items. Especially if they are ceramic coated, chromed, or made from Stainless steel. Therefore it is essential to provide proper maintenance on a regular basis.

Exhaust system corrosion will occur if moisture (condensation) is present in the exhaust system. Make sure that the vehicle is driven at least 20 to 30 minutes, when ever the vehicle is started, to completely eliminate any moisture that is created by the combustion process. Failure to do so may result in the pipes rusting from the inside out (excluding stainless steel).

When storing your vehicle for an extended period of time, be sure the area is of low moisture as this will help from condensation producing rust. Wipe down the headers and dry thoroughly, then coat the headers with WD-40. Pay particular attention to the areas where the tubes are welded to the header flanges and where the tubes come in close proximity to each other. These areas are prone to rusting, as most coatings are unable to get between the tubes in these areas, during the coating process. If rust occurs, it will travel into and under the coating. When you are ready to start the vehicle after storage, remove the WD-40 by soap and water. Start the vehicle and heat the exhaust till all the moisture is out of the exhaust.

If you ever have any oil burned on or surface deposits from water, or other liquids, more aggressive measures will need to be taken. We have found that wet sanding the stained area with #0000 steel wool or extremely fine scotch brite is all that is needed to remove and then polish as you would when cleaning your headers.

POLISHING:

Once all foreign matter has been removed, the thermal barrier coating may be polished with a clean soft cloth and a non-abrasive metal (aluminum) polish such as Satin Gloss, MAAS, Mothers Mag and Wheel Polish, Blue Magic, Metal Magic, or Eagle One Mag Polish. For the satin finish a periodic scrubbing with a red or gray Scotchbrite pad may be used to remove oils and contaminants from the coating surface.

Please keep in mind that we CAN'T get coating where there is no space between the metal, therefore these areas are subject to rust if the metal can rust. Also with used rusty parts there are places that the blasting media cannot reach to remove all the rust and the coating does not adhere to rust. Exhaust designs with open and/or removable tubes and welded flanges can last a LIFETIME!