

STRAIGHTLINE

PERFORMANCE

Arctic Cat C-TEC 2 Lightweight Carbon Fiber Muffler (full Stainless) 131-165

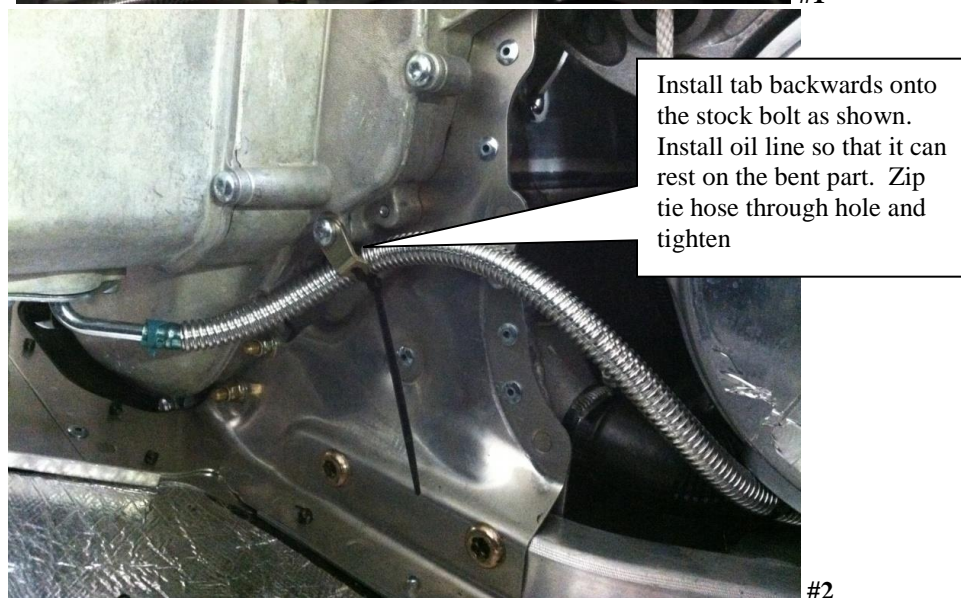
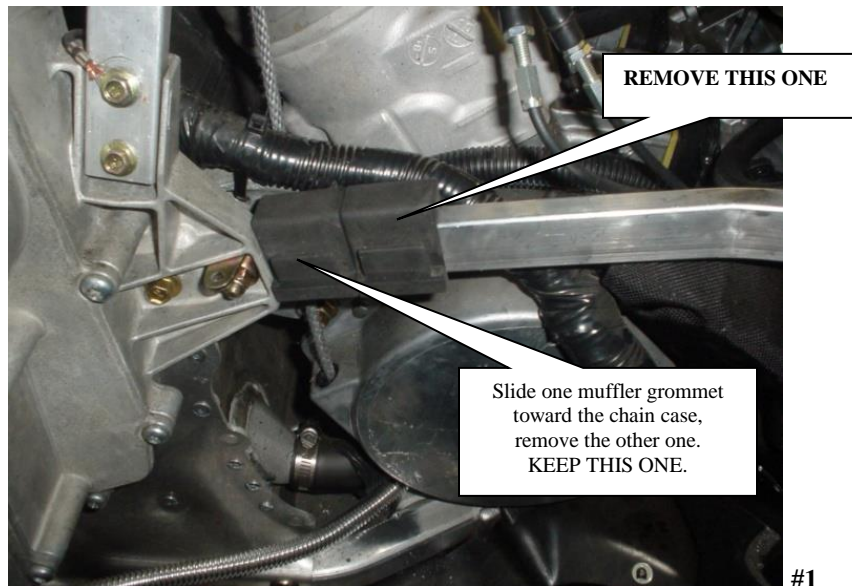
BE SURE TO HAVE ALL PERFORMAMCE PARTS INSTALLED BY A PROFFESIONAL AND QUALIFIED INSTALLER.

Installation Instructions

1. Remove old muffler and keep all stock springs. (all but one will be used) The removal of the entire hood may be required to install the muffler.
2. Using one of the 2 rubber bumpers from the backside of the muffler for you carbon fiber support on the chassis frame. Picture#1.
3. Loosen the spring tab (located with arrow) as shown in picture # and rotate to facing upwards.
4. Next, install the supplied tab (ws-380) backwards onto the stock chain case bolt as shown. Install oil line so that it can rest on the bent part. Route zip tie around hose and through hole, and tighten. Picture in #2
5. Next, remove the one rubber grommet on the stock muffler and install into the Straightline muffler the same as removed from the stock one.
6. Install the muffler and spring down the back of the muffler onto the stock spring tab muffler. (picture #4)
7. After installation inspect the rubber grommet under the chassis to be sure that it is not pushed up into the chassis. (#5)

Be sure the muffler has no manufacture defects.

If the muffler has been run or used there are no warrantees for fitment.



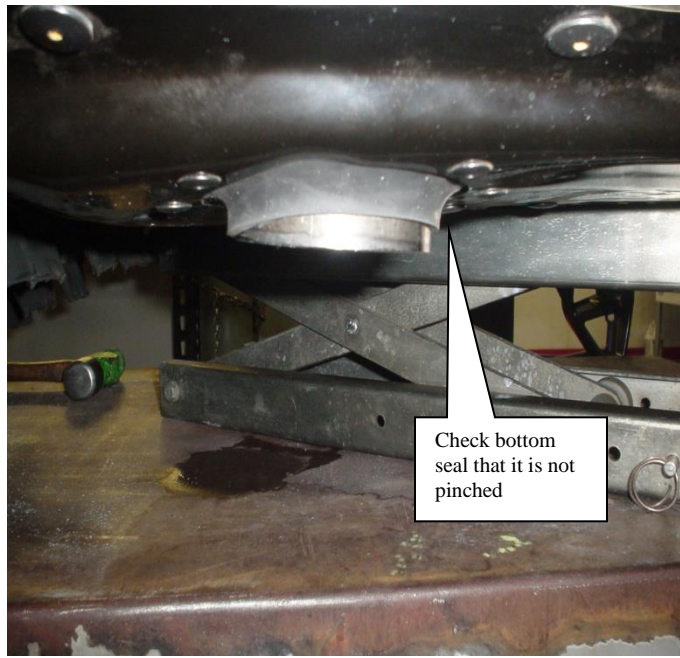


#3



Use this stock mount for spring tab hold down. Use one of the 2 longer stock springs for this mount location.

#4



#5

BOM:

Quantity	Part #	Descriptions	In Box
1	131-160	Muffler	
1	WS-380	Clip with 2 Holes	
1	NP-209	Zip Tie	
1		Sticker	
1		Directions	

Checked and Packaged By

Technical questions please email tech@straightlineperformance.com



Facebook @ straightlineperformanceinc

Youtube @ straightlineperfinc

Twitter @ straightlineperf